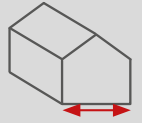
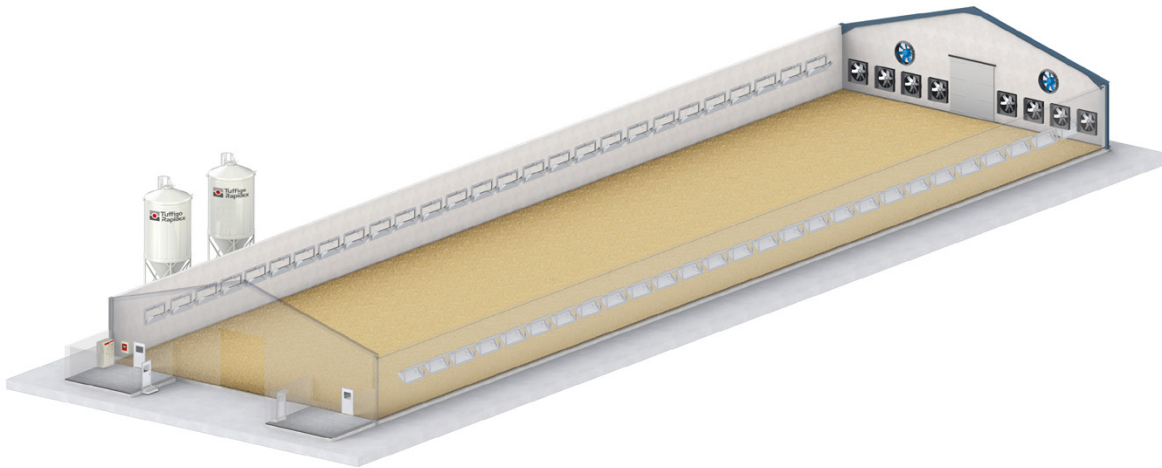
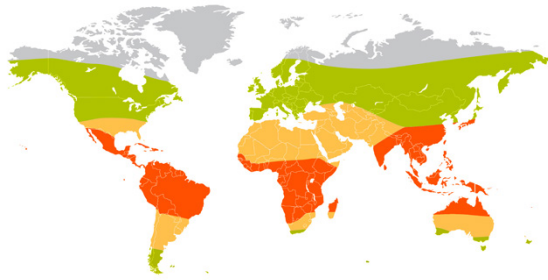




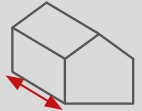
TUNNEL VENTILATION CONCEPT

100% Tunnel extraction

- Mild climate
- Dry hot climate
- Tropical climate

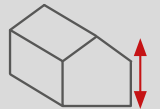


Width
from 14 to 18 m

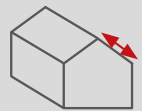


Length
• from 80 to 100 m
in 2 zones
• from 101 to 150 m
in 3 zones

* Maximum length
125 m (single gable)
150 m (double gable)



Sidewall height
from 2 to 3 m



Slope
from 0 to 30 %

Broiler



In hot and
tropical climates

Breeder



Layer



ADVANTAGES:



STARTING
PHASE

- In mild climate, suitable for last phases in maximum vent
- Hot dry and tropical climates: suitable at batch start for temperatures not below 15°C .



FINISHING
PHASE

- Tunnel ventilation suitable during finishing phase for its chilling effect (high air speed) or in case of high temperature outside
- In combination with pad cooling or HP fogging (in dry hot climate) or in replacement of cooling (air speed) if case of high humidity above 75% (subtropical climate).